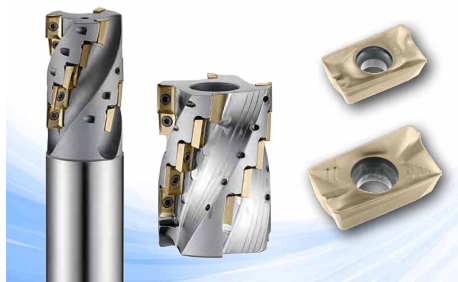


Helical Milling - CAPH 玉米粗銑刀

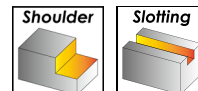
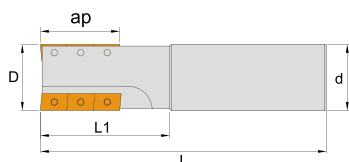
CAPH Series



- Use APKT inserts with 2 cutting edges.
- Offers large depth of cut in rough contouring applications.
- 20~63mm cutter diameter.
- 使用 APKT 銑刀片，2 個可用切削角
- 適用於較大切削深度的輪廓粗加工應用
- 20~63mm 刀桿直徑

Indexable Milling

CAPHE - Milling Tools 玉米粗銑刀

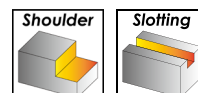
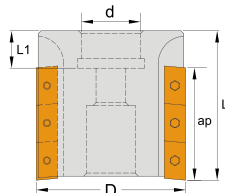


Insert Brand 建議刀片 : Winstar, Iscar, Ceratizit, ...

Order No. 訂購編碼	D	ap	L1	L	d	T × Pcs	Inserts	Screw	Wrench	Stock
ICAPHE305020100	20	28	42	107	20	1 × 5	APKT1003	ITS2515	ITK08	●
ICAPHE308025120	25	35	50	125	25	2 × 4				●
ICAPHE315032130	32	44	60	135	32	3 × 5				●

● stock ○ by inquiry

CAPHF - Milling Tools 玉米粗銑刀



Insert Brand 建議刀片 : Winstar, Iscar, Ceratizit, ...

Order No. 訂購編碼	D	ap	L2	L	d	T × Pcs	Inserts	Screw	Wrench	Stock
ICAPHF409050220	50	42	21	69	22	3 × 3	APKT1604 or APET1604	ITS4023	ITK15	●
ICAPHF412063250	63	42	38	69	25.4	4 × 3				●
ICAPHF420063252	63	68	38	97	25.4	4 × 5				●

● stock ○ by inquiry

Helical Milling - CAPH 玉米粗銑刀

Recommended Cutting Conditions 建議切削數據

Working Material	APKT1003		APKT1604	
	Vc	fz	Vc	fz
Carbon Steel / Alloy Steel	120 ~ 250	0.10 ~ 0.22	120 ~ 250	0.12 ~ 0.28
Stainless Steel	100 ~ 180	0.08 ~ 0.18	100 ~ 180	0.10 ~ 0.22
Cast Iron	120 ~ 250	0.10 ~ 0.22	120 ~ 250	0.12 ~ 0.28
Aluminum Alloy	-	-	300 ~ 1000	0.10 ~ 0.40
High Temperature Alloy	40 ~ 100	0.07 ~ 0.14	40 ~ 100	0.10 ~ 0.18

Insert Specifications 刀片規格

Insert	Dimensions (mm)				
	A	B	S	r	d1
APKT100304	10.5	6.7	3.5	0.4	2.8
APKT100308	10.5	6.7	3.5	0.8	2.8
APET160402	16.3	9.525	4.76	0.2	4.5
APET160404	16.3	9.525	4.76	0.4	4.5
APKT160408	16.3	9.525	5.25	0.8	4.5

Insert Designation 刀片型號

Insert	Order No. 訂購編碼	Designation	Working Material					
			P	M	K	N	S	H
	IAPKT100304ESG23AX	APKT100304PDER-SG-CX23AX	○	○	○		○	●
	IAPKT100304EMG23AX	APKT100304PDER-MG-CX23AX	○	○	○		○	●
	IAPKT100304EMG32HS	APKT100304PDER-MG-CX32HS	●	●	●		○	
	IAPKT100304EMG33TX	APKT100304PDER-MG-CX33TX	●	●	●		●	●
	IAPKT100304EMG43TX	APKT100304PDER-MG-CX43TX	●	●	●		●	
	IAPKT100308EMG23AX	APKT100308PDER-MG-CX23AX	○	○	○		○	●
	IAPKT100308EMG32HS	APKT100308PDER-MG-CX32HS	●	●	●		○	
	IAPKT100308EMG33TX	APKT100308PDER-MG-CX33TX	●	●	●		●	●
	IAPKT100308EMG43TX	APKT100308PDER-MG-CX43TX	●	●	●		●	
	IAPKT100304ERG32HS	APKT100304PDER-RG-CX32HS	●	●	●		○	
	IAPKT100304ERG33TX	APKT100304PDER-RG-CX33TX	●	●	●		●	●
	IAPET160402FAL10	APET160402PDFR-AL-CX10				●		
	IAPET160404FAL10	APET160404PDFR-AL-CX10				●		
	IAPET160402FFG23AX	APET160402PDFR-FG-CX23AX	○	○	○		○	●
	IAPET160404FFG23AX	APET160404PDFR-FG-CX23AX	○	○	○		○	●
	IAPKT160408EMG23AX	APKT160408PDER-MG-CX23AX	○	○	○		○	●
	IAPKT160408EMG32HS	APKT160408PDER-MG-CX32HS	●	●	●		○	
	IAPKT160408EMG33TX	APKT160408PDER-MG-CX33TX	●	●	●		●	●
	IAPKT160408EMG43TX	APKT160408PDER-MG-CX43TX	●	●	●		●	
	IAPKT160408ERG23AX	APKT160408PDER-RG-CX23AX	○	○	○		○	●
	IAPKT160408ERG32HS	APKT160408PDER-RG-CX32HS	●	●	●		○	
	IAPKT160408ERG33TX	APKT160408PDER-RG-CX33TX	●	●	●		●	●
	IAPKT160408ERG43TX	APKT160408PDER-RG-CX43TX	●	●	●		●	