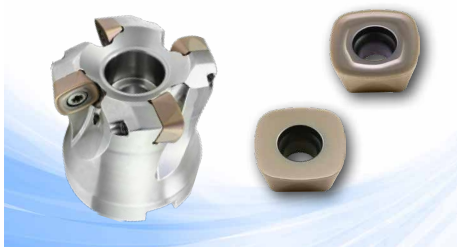


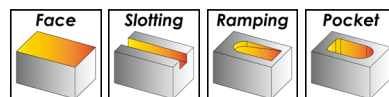
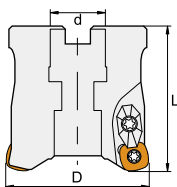
High Feed Milling - CASR 高進給銑刀

CASR Series



- Use SDMT or SDNW inserts with 4 cutting edges.
- High feed and more economical for wide range applications.
- 50~80mm cutter diameter, max. 1.5mm depth of cut.
- 使用 SDMT 或 SDNW 銑刀片，4 個可用切削角
- 高進給、高經濟及高剛性切削刀口適用於各種材料和應用
- 50~80mm 刀盤直徑，最大切削深度可達 1.5mm

CASRF - Milling Tools 高進給銑刀



Insert Brand 建議刀片 : Winstar, Hitachi, ...

Order No. 訂購編碼	D	L	d	T	Inserts	Screw	Wrench	Clamp	Clamp Screw	Stock
ICASRF203050220	50	22	50	3	SDMT1205 SDNW1205	IMS4011A	ITF15	IYR-06	IMS4008ES	●
ICASRF204050220	50	22	50	4						●
ICASRF203063220	63	22	50	3						●
ICASRF204063220	63	22	50	4						●
ICASRF204080310	80	31.75	55	4						●
ICASRF204080320	80	32	55	4						●
ICASRF205080310	80	31.75	55	5						●
ICASRF205080320	80	32	55	5						●

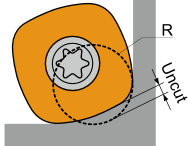
● stock ○ by inquiry

Recommended Cutting Conditions 建議切削數據

Working Material	Vc	fz	ap
Carbon Steel / Alloy Steel	120 ~ 250	0.8 ~ 1.8	0.3 ~ 1.5
Stainless Steel	100 ~ 180	0.6 ~ 1.2	0.3 ~ 1.0
Cast Iron	120 ~ 250	0.8 ~ 1.8	0.3 ~ 1.5
High Temperature Alloy	40 ~ 100	0.5 ~ 1.2	0.3 ~ 1.0
Hardened Steel	50 ~ 100	0.5 ~ 1.2	0.3 ~ 1.0

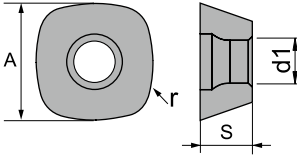
Corner R Programming R角軟體模擬設定

Designation	Approx. R (mm)	
	Input. R	Uncut
SDMT1205 / SDNW1205	4.5	0.83



Insert Specifications 刀片規格

Insert	Dimensions (mm)			
	A	S	r	d1
SDMT1205	12.7	5.56	15	4.6
SDNW1205	12.7	5.56	15	4.6



Insert Designation 刀片型號

Insert	Order No. 訂購編碼	Designation	Working Material					
			P	M	K	N	S	H
	ISDMT1205ZDSNMG23AX	SDMT1205ZDSN-MG-CX23AX	○	○	○		○	●
	ISDMT1205ZDSNMG32HS	SDMT1205ZDSN-MG-CX32HS	●	●	●		○	
	ISDMT1205ZDSNMG33TX	SDMT1205ZDSN-MG-CX33TX	●	●	●		●	●
	ISDMT1205ZDSNMG43TX	SDMT1205ZDSN-MG-CX43TX	●	●	●		●	
	ISDMT1205ZDTNMG23AX	SDMT1205ZDTN-MG-CX23AX	○	○	○		○	●
	ISDMT1205ZDTNMG32HS	SDMT1205ZDTN-MG-CX32HS	●	●	●		○	
	ISDMT1205ZDTNMG33TX	SDMT1205ZDTN-MG-CX33TX	●	●	●		●	●
	ISDMT1205ZDTNMG43TX	SDMT1205ZDTN-MG-CX43TX	●	●	●		●	
	ISDMT1205ZDTNRG23AX	SDMT1205ZDTN-RG-CX23AX	○	○	○		○	●
	ISDMT1205ZDTNRG32HS	SDMT1205ZDTN-RG-CX32HS	●	●	●		○	
	ISDMT1205ZDTNRG33TX	SDMT1205ZDTN-RG-CX33TX	●	●	●		●	●
	ISDMT1205ZDTNRG43TX	SDMT1205ZDTN-RG-CX43TX	●	●	●		●	
	ISDNW1205ZDSNMG32HS	SDNW1205ZDSN-MG-CX32HS	●	●	●		○	
	ISDNW1205ZDSNMG33TX	SDNW1205ZDSN-MG-CX33TX	●	●	●		●	●
	ISDNW1205ZDTNRG23AX	SDNW1205ZDTN-RG-CX23AX	○	○	○		○	●
	ISDNW1205ZDTNRG32HS	SDNW1205ZDTN-RG-CX32HS	●	●	●		○	
	ISDNW1205ZDTNRG33TX	SDNW1205ZDTN-RG-CX33TX	●	●	●		●	●
	ISDNW1205ZDTNRG43TX	SDNW1205ZDTN-RG-CX43TX	●	●	●		●	
	ISDNW1205ZDTNRG37TA	SDNW1205ZDTN-RG-CX37TA	○	○	●		○	○